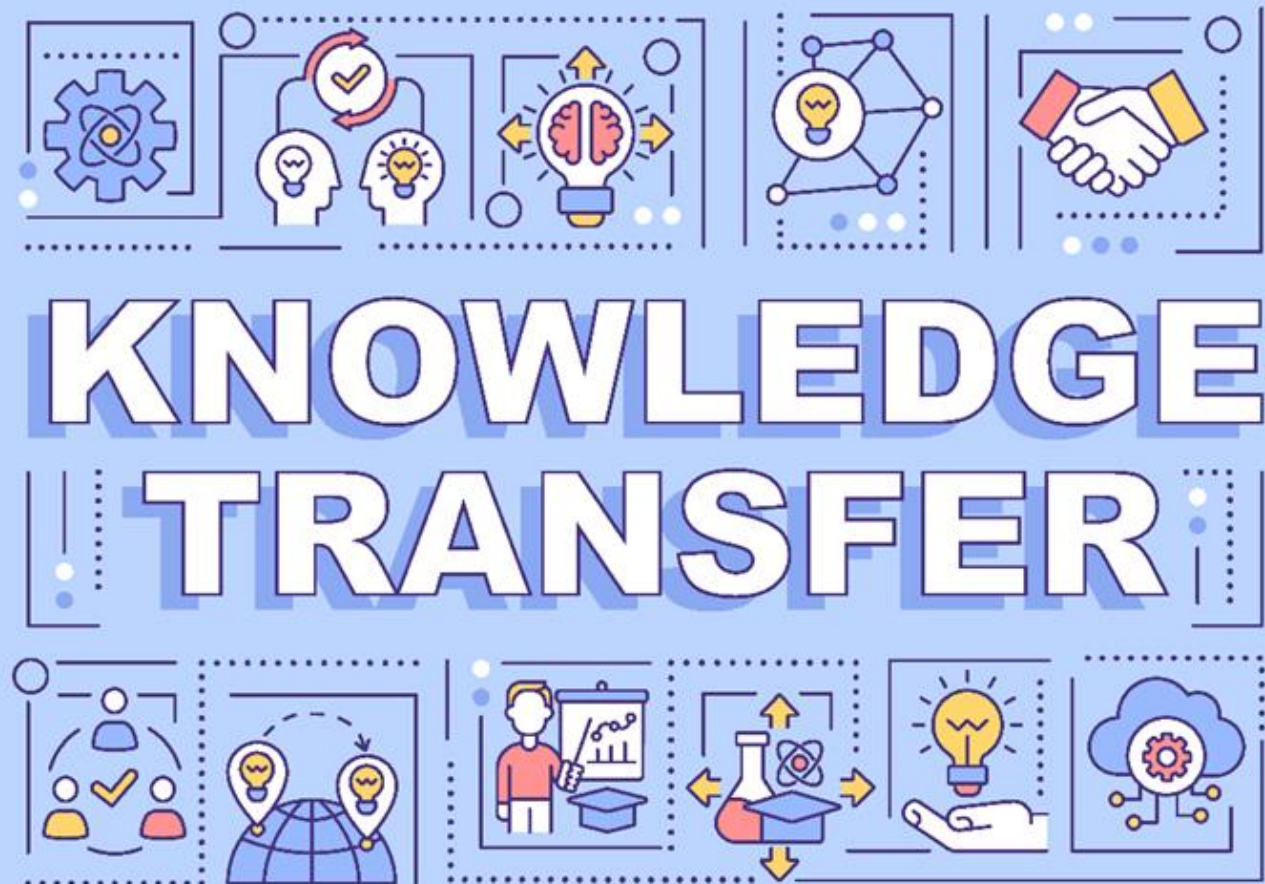
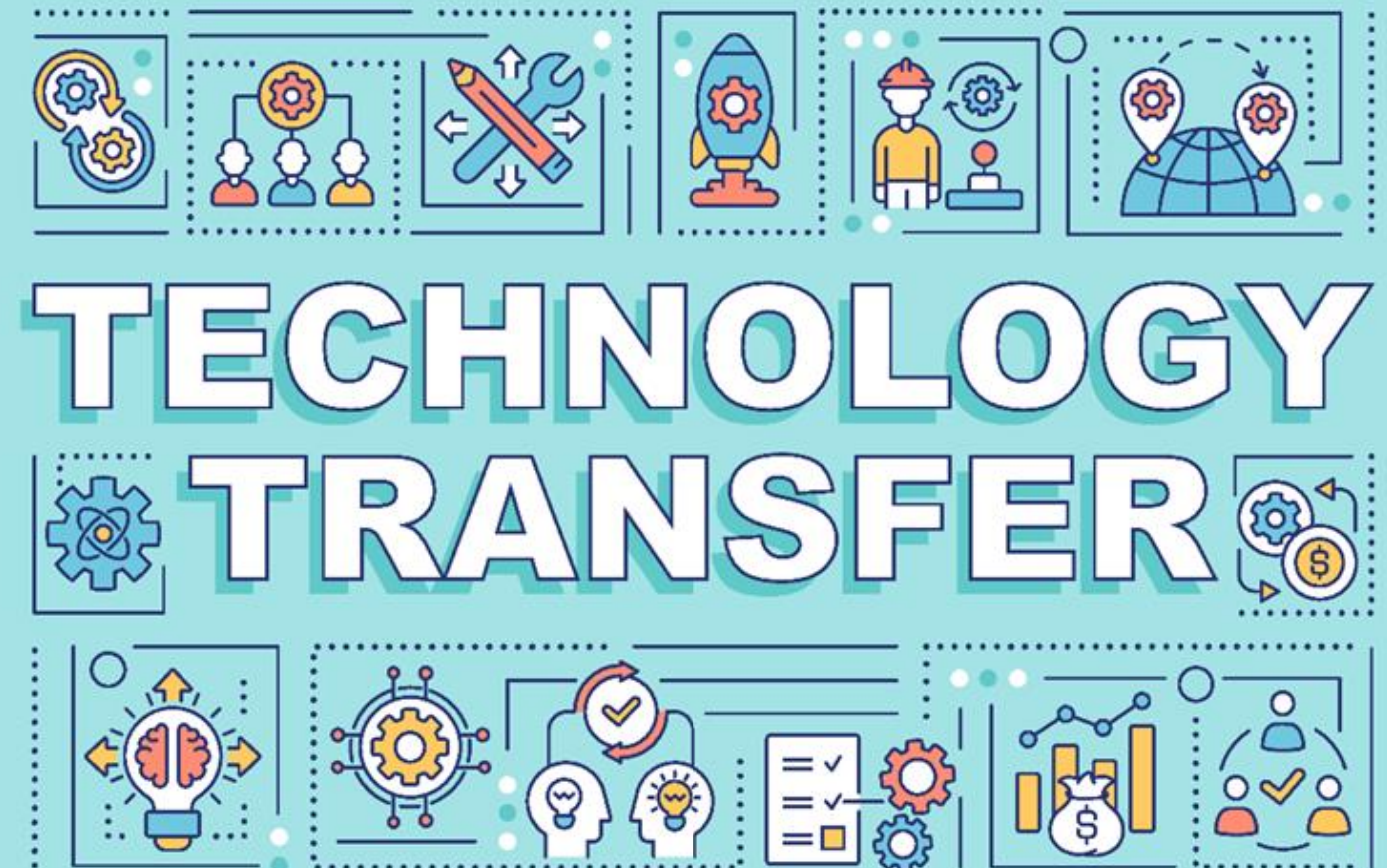


THIRD MISSION | TRANSFER AT THE MOUNT KENYA UNIVERSITY



&



KTT KNOWLEDGE AND TECHNOLOGY TRANSFER

Knowledge transfer is generated from learning, training and research to communities within and outside the university. It is geared towards solving societal problems, improving processes, leveraging on innovative technologies, promoting data-based decision making on spheres of economic, social, culture and politics. It requires open communication and involvement of all participants.

UBL UNIVERSITY BUSINESS LINKAGES

Interactions between firms and universities/ public research centers with the goal of solving problems, working on R&D/ innovation projects or gathering scientific and/ or technological knowledge. This includes different initiatives, ranging from practical student projects to training and consulting services up to universities start-up support. Ultimately, this should reflect in the infrastructural capacity of the university.

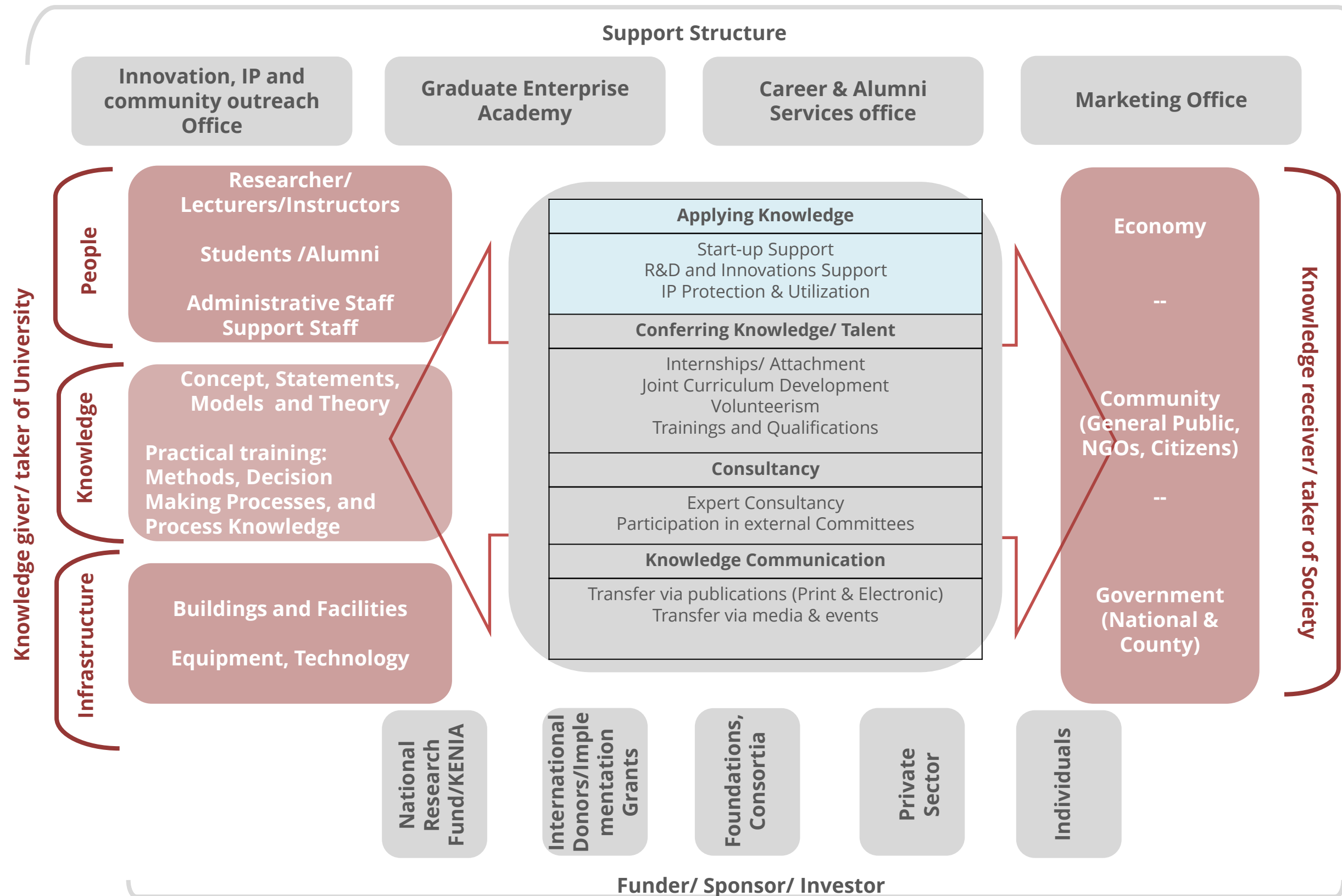
CAREER ENHANCEMENT

CE

A process designed to provide the essential tools for graduates to successfully transition to the labor market and build a lasting career. Build the knowledge, skills and confidence to find a rewarding job, advance one's career and increase success in further training.



TRANSFER ECOSYSTEM | MOUNT KENYA UNIVERSITY



UNIVERSITY BUSINESS LINKAGES | APPLYING KNOWLEDGE

UBL R&D AND INNOVATION SUPPORT

This channel describes the joint activity of the University with businesses in which a contractual framework structures joint research of an object (research cooperation) or the mutual exchange of research services and resources (e.g. commissioned research or research-related services). Generally, R&D tends to address a complex research question in a methodologically open manner and includes all partners. This can entail smaller subprojects, services and resources to be provided or exchanged in academic services to be defined by the principal and indicated clearly prior to the cooperation.

START-UP SUPPORT UBL

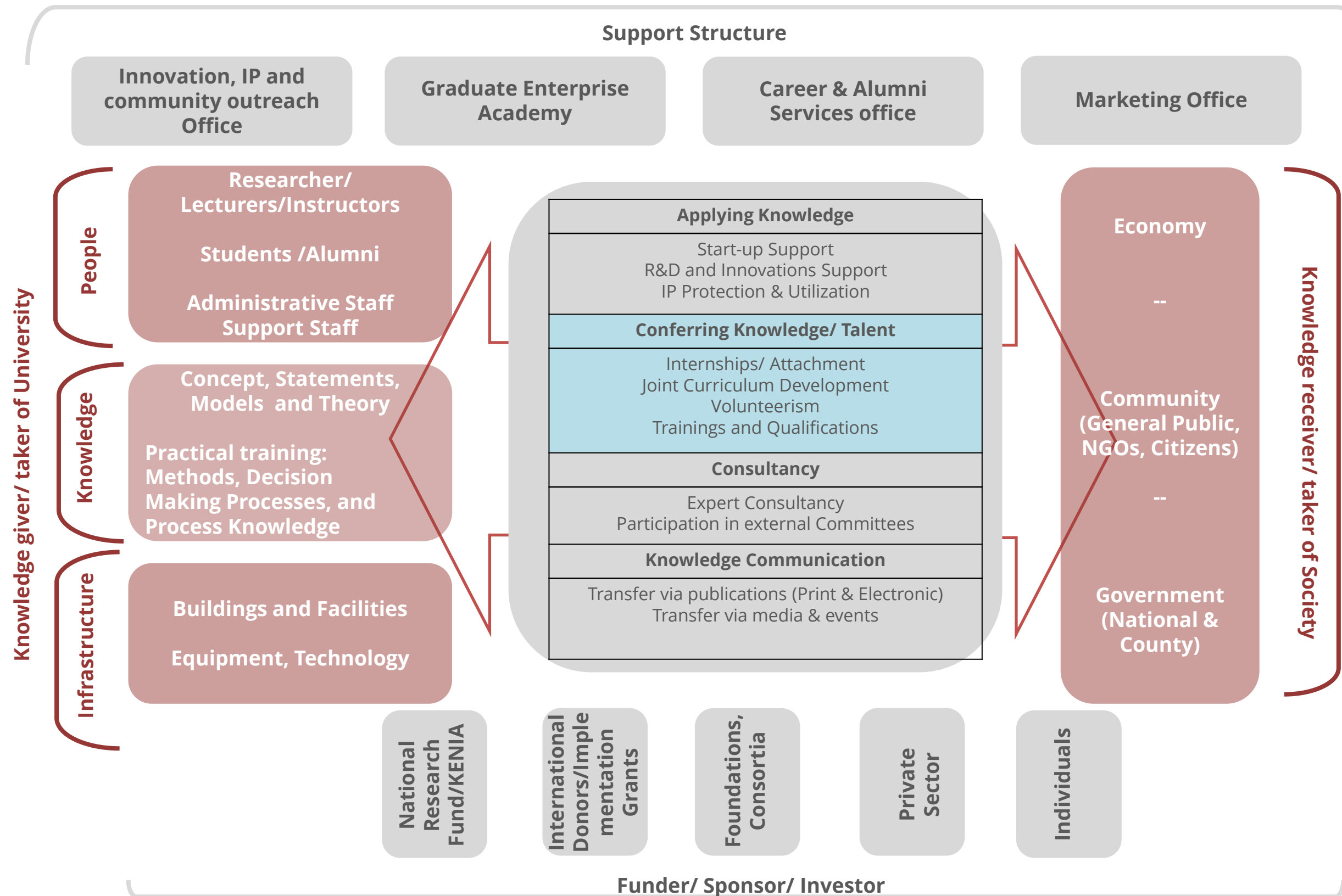
This channel brings together any activity aiming to convert academic knowledge into market-ready products, to identify a suitable business form, and to place businesses on the market. It contains the actors and infrastructure that is in place to facilitate university transfer through entrepreneurship and start-up creation.

UBL IP PROTECTION & UTILIZATION

This channel pools any activity aiming to generate, protect or process intellectual property (IP). Ordinarily, research outcomes focused on technology are protected through patents or registered designs. The aim is to acquire partners interested in transfer or licensing of property rights held by the University, or technology partnerships.



TRANSFER ECOSYSTEM | MOUNT KENYA UNIVERSITY



UNIVERSITY BUSINESS LINKAGES | CONFERRING KNOWLEDGE

CE INTERNSHIPS & ATTACHMENT

This channel describes the joint activity of the University with businesses in which a contractual framework structures joint research of an object (research cooperation) or the mutual exchange of research services and resources (e.g. commissioned research or research-related services). Generally, R&D tends to address a complex research question in a methodologically open manner and includes all partners. This can entail smaller subprojects, services and resources to be provided or exchanged in academic services to be defined by the principal and indicated clearly prior to the cooperation.

TRAININGS AND QUALIFICATIONS CE

This channel brings together any activity aiming to convert academic knowledge into market-ready products, to identify a suitable business form, and to place businesses on the market. It contains the actors and infrastructure that is in place to facilitate university transfer through entrepreneurship and start-up creation.

VOLUNTERISM UBL

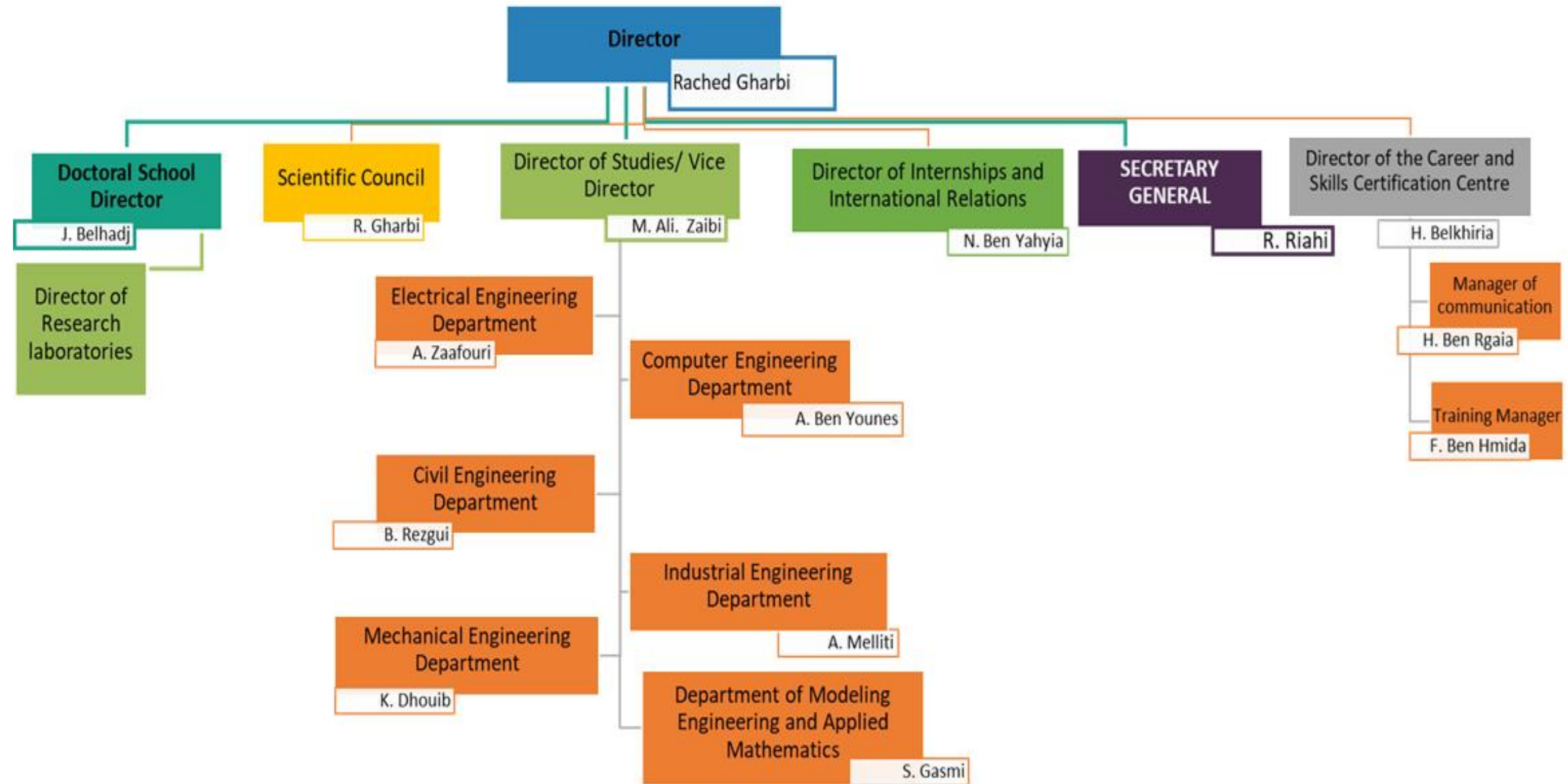
Volunteerism at MKU plays a vital role in fostering community engagement and social development. Many students and faculty members actively participate in volunteer initiatives contributing to both local upliftment and the holistic growth of the university experience. These efforts cultivate a sense of civic responsibility among the university population.

CE JOINT CURRICULUM DEVELOPMENT

This channel pools any collaboration between the MKU and private sector partners to develop the setup of the curriculum and identify specific topics to integrate. With our core mandate to become the leading University of Applied Sciences in Kenya the joint efforts in creating practice oriented curriculums is essential.



MOUNT KENYA UNIVERSITY | TRANSFER ORGANIZATIONAL CHART



CAPACITIES & COMPETENCIES | MKU



UNLOCKING INFINITE POSSIBILITIES



CAPACITIES AND COMPETENCIES| MKU

POTENT INFRASTRUCTURE

The development of our infrastructure is a key aspect at MKU to guarantee an ideal environment for our students, researchers and staff as well as for our private sector partners. While a good IT infrastructure is one of the most important parts of the modern university, we do not stop at such and aim to organize and utilize our infrastructure to the greater idea of an applied science university. With that approach at heart we like to adjust and open up our infrastructure for collaboration with companies and other partners.



MULTI-DISCIPLINARY TRAINING & RESEARCH

The complexity of the challenges that the society meets every day is becoming more and more apparent. That reflects on the innovative solutions we have to find to address those issues. We strongly believe that an multi-disciplinary approach is the most adequate way to address this topic and develop successful and sustainable solutions. The practical orientation of our university is already a testament to the recognition of this approach. Through a multi-disciplinary mindset we contribute versatile, problem solving and open minded graduates and research to the society and specifically to our private sector partners.

MEDICAL TRAINING EXCELLENCE

MKU is already one of the best institutions in medical training, and will push this topic further through integrated collaborative applied research activities (multi and interdisciplinary). The plans for the development of ultra-modern medical facilities will initiate the continuous successful future for MKU in the medical field. We recognize our responsibility in this field as well and aim to build on our excellent training programs through modern and practical formats that operate close to the real challenges of the day to day work.

LOCATION – INDUSTRIAL HUB

To become a successful University of Applied Sciences, the immediate proximity to the private sector is invaluable. The location of our main campus in Thika opens up the potentials of the industrial hub. Nonetheless the MKU is with its eight national campuses wide spread. We understand the necessity of an active approach to take on societal challenges and to identify the needs of our private sector partners.



TRANSFER MEASURES | MKU



THE ROAD AHEAD | PROMOTION OF TRANSFER ACTIVITIES



TRANSFER MEASURES | MKU

JOINT PROJECTS IN THE MEDICAL INDUSTRY (UBL&CE)

In this context MKU already made important investments in training applied science e.g. by providing training facilities for pharmacies, medicine, engineering, clinical medicine, dental sciences and ICT. Additionally the plan to establish a teaching and referral hospital within the next 10 years will bring the development plans to fruition. MKU is one of the best institutions in medical training, and will push this topic further through integrated collaborative applied research activities (multi and interdisciplinary) until 2025.

INTERNATIONALIZATION (UBL&CE)

Internationalization is a leading activity and of utmost importance to the university, but not just as a goal in its own right. It is about improving the quality of research, education and services to society, in which transfer activities play a key role. We will develop this through more exchange formats on national and continental south-south exchange as well through stronger global collaborative projects with partners from all over the world.



PUSH FOR PARTNERSHIP AGREEMENT WITH 12 LOCAL COMPANIES (UBL&CE)

We are building on our successful Business Breakfast initiative which has been well received and is creating new contacts between MKU and the private sector. To lay the foundation for future collaboration, we aim to establish new partnership agreements with 12 local firms based on activities around UBL & CE to the benefit of the trifecta of our students, the private sector and MKU.

SERVICE LEARNING (UBL&CE)

Service Learning will take a greater importance at MKU from 2022 onwards. This is in response to the need to foster service provision to industry and society. As a result, learners/trainees will be able to identify novel solutions for the organizations that MKU will partner with. Consequently, trainees will at the end of each programme, acquire relevant work skills and ideas that contribute to self-reliance through identification of entrepreneurial ideas, necessary for commercialization.

